

Version 9.3

SmartPTT PLUS

System Requirements

May 2018



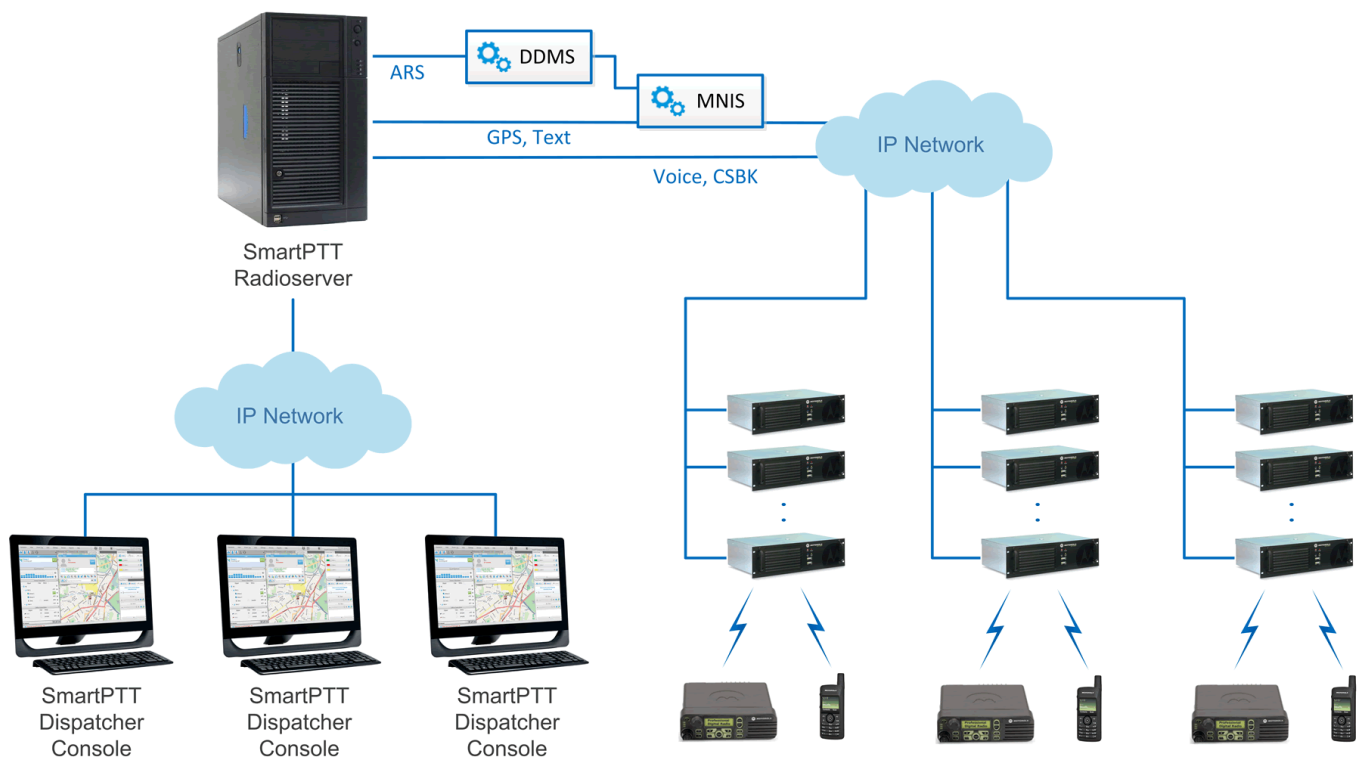
Contents

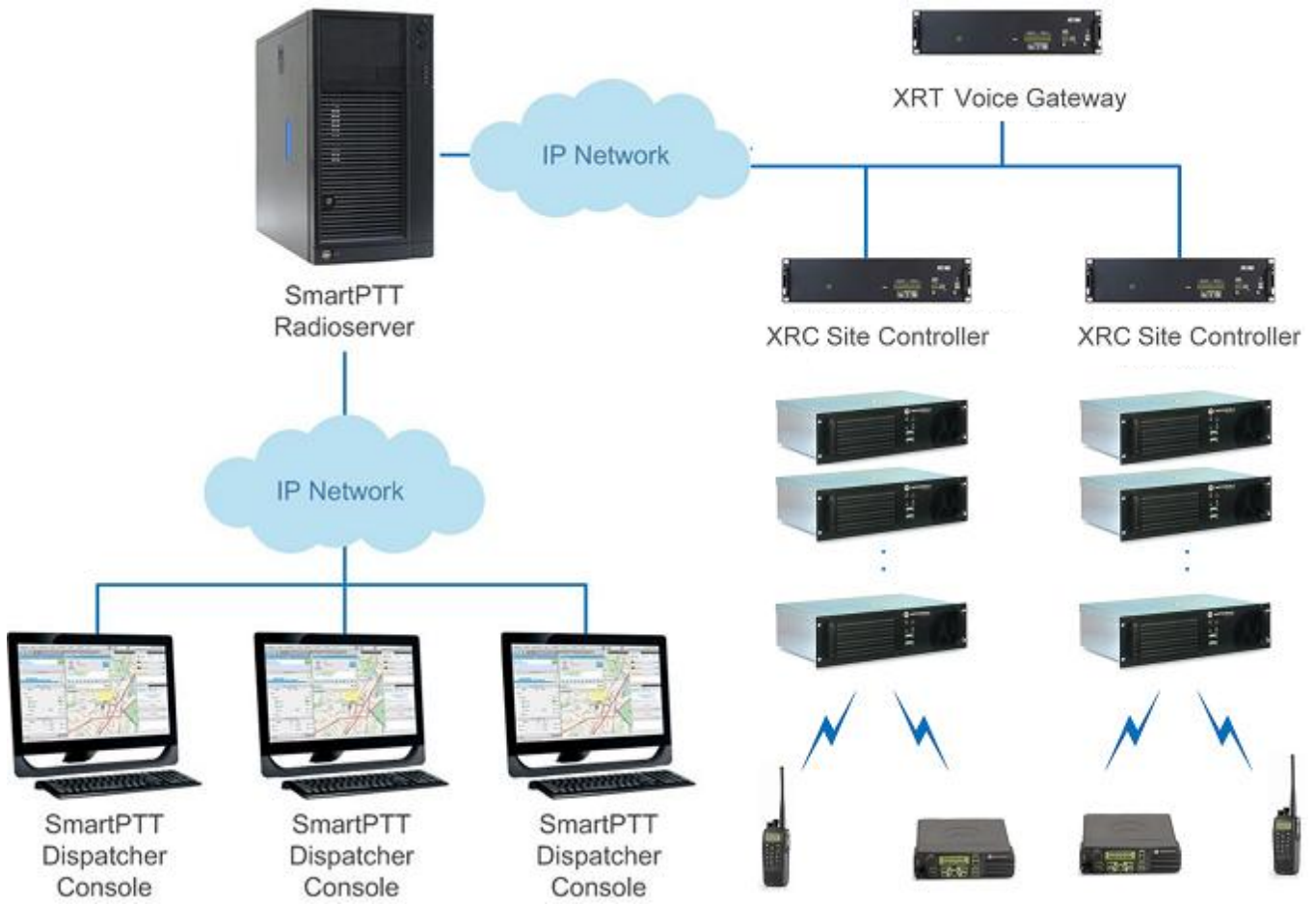
1 Introduction	3
2 Minimum Hardware Requirements for SmartPTT Dispatcher	6
3 Minimum Hardware Requirements for SmartPTT Radioserver	8
4 Networking Requirements	10
4.1 Network Quality	10
4.2 Bandwidth Requirements	11
5 Support and Compatibility	13
5.1 MOTOTRBO Infrastructure	13
5.2 Elcomplus Products	14
5.3 Third Party Products	14
6 List of Ports Used by SmartPTT System	15

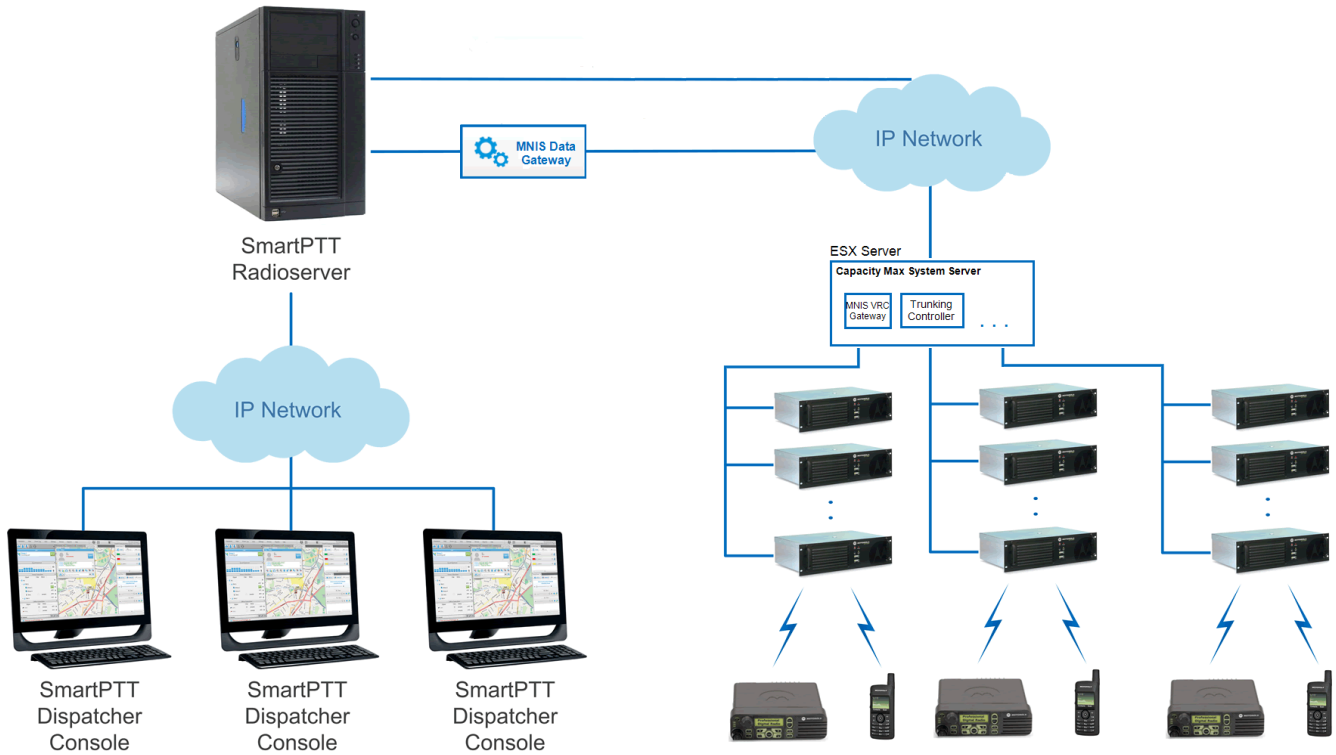
1 Introduction

SmartPTT-based dispatching system can include several dispatch consoles, SmartPTT Radioservers and communication channels connecting them. Thus, technical requirements are related to the following system components:

- SmartPTT Dispatcher
- SmartPTT Radioserver Configurator
- Communication channels connecting SmartPTT Dispatcher and SmartPTT Radioserver, and communication channels connecting SmartPTT Dispatcher and MOTOTRBO repeaters, and control stations.







However, the number of the required components can increase. This depends on the product type and required functionality.

2 Minimum Hardware Requirements for SmartPTT Dispatcher

Operating system: Windows® 10 Professional, 32-bit and 64-bit
Windows® 8.1, 32-bit and 64-bit
Windows® 8 Enterprise or 8.1, 32-bit and 64-bit
Windows® 7 Professional SP1, 32-bit and 64-bit

NOTE

Windows 7 with Microsoft .NET Framework 4.7.1 must have the KB 4054183 update. The KB 4055002 update must be uninstalled. For details, see [Microsoft Support information](#).

Processor: Intel® Core i5 for systems with less than 3,000 subscribers.
Intel® Core i7 for systems with more than 3,000 subscribers or activated GPS/Monitoring/Indoor services.

Memory: 4 GB of RAM or better for systems with less than 3,000 subscribers.
8 GB of RAM or better for systems with more than 3,000 subscribers or activated GPS/Monitoring/Indoor services.

Hard disk: 7200 rpm SATA drive
20 GB space for software and database

Video card: 1 GB RAM PCI-E or similar CPU-integrated for systems with voice transmission only.
2 GB RAM PCI-E or similar CPU-integrated for systems with activated GPS/Monitoring/Indoor services.

Monitor: 1366 × 768 pixel or better. 16-bit color.
23" or larger LCD monitor recommended for full-featured console position.

USB ports: At least 6 USB ports (2.0 or 3.0).

Sound card: Internal PCI-E Sound Blaster Audigy RX.
External Sound Blaster X-Fi Go.

Audio recording device: A microphone or a headset.

Playback device: Headphones or a headset.

Network adapter: 10/100/1000 Gbps Ethernet adapter

Pointer: A mouse or a trackball.

Keyboard: A standard keyboard.

NOTE

These are standard system requirements for SmartPTT Dispatcher. They can change depending on the configuration, complexity and/or workload of the system.

3 Minimum Hardware Requirements for SmartPTT Radioserver

Operating system: Windows® 7 Professional SP1, 32-bit and 64-bit
Windows® 8 Enterprise or 8.1, 32-bit and 64-bit
Windows® 8.1, 32-bit and 64-bit
Windows® 10 Professional, 32-bit and 64-bit

Windows® Server 2016
Windows® Server 2012 R2
Windows® Server 2008

NOTE

Windows 7 and Windows Server 2008 R2 Service Pack 1 with Microsoft .NET Framework 4.7.1 must have the KB 4054183 update. The KB 4055002 update must be uninstalled. For details, see [Microsoft Support information](#).

Processor: Intel® Core i5 for systems with less than 3,000 subscribers.
Intel® Core i7 for systems with more than 3,000 subscribers or activated GPS/Monitoring/Indoor services.

Memory: 4 GB of RAM or better for systems with less than 3,000 subscribers.
8 GB of RAM or better for systems with more than 3,000 subscribers or activated GPS/Monitoring/Indoor services.

Hard disk drive: 7200 rpm SATA drive

40 GB space (software and database only)

190 GB space (software, database, and voice records; for details, see “HDD Space Estimation” in *SmartPTT PLUS Installation and Configuration Guide*)

USB ports: One USB port per USB input device (mouse, keyboard) or expansion hub

One USB per each control station connected directly to the computer

Sound card: Multi-channel AUDIO-Delta 1010LT, MAYA44XTe, ICON Digital Cube Pro USB

NOTE

External sound cards required to support multiple control stations connected directly to the computer.

Network adapter: 10/100/1000 Gbps Ethernet adapter

NOTE

These are standard system requirements for SmartPTT Radioserver. They can change depending on the configuration, complexity and/or workload of the system.

4 Networking Requirements

4.1 Network Quality

Computer networks where SmartPTT installed and used, must comply the following requirements:

Packet Loss:	Slightly distorted voice: 0–2.5 % Distorted voice: 2.5–15.0 %
Two-Way Delay:	IP access to radio network: 0–90 ms SIP gateway: 0–60 ms
Jitter:	IP access to radio network: 0–90 ms SIP gateway: 0–60 ms

IP access to radio network means the connection to the hardware/software solution that provides access to the radio network:

- Connection to the RG-1000e device.
- Connection to repeaters:
 - Master repeater (for voice calls and monitoring).
 - Other repeaters (for monitoring).
- Connection to the computer with MNIS Data Gateway Relay application.
- Connection to the computer with Device Discovery and Mobility Service.
- Connection to XRC controller (Connect Plus).
- Connection to XRT controller (Connect Plus).
- Connection to each Presence Server (Capacity Max).
- Connection to each voice gateway (Capacity Max).

SIP gateway means the IP connection to the gateway that provides the access to the analog telephone line.

4.2 Bandwidth Requirements

Computer networks where SmartPTT is installed and used must provide the specific bandwidth between the computer with SmartPTT Radioserver and other IP devices of the dispatch system. All the following requirements are applicable to the one way transmissions.

Voice transmission

All the following requirements are applicable to the single voice stream.

Source / Target	Minimum	Comments
SmartPTT Dispatcher application	13 kbps	for DMR vocoder
	100 kbps	for G.711 vocoder
RG-1000e radio gateway	from 65 kbps	exact value depends on the vocoder parameters
Master repeater XRT controller MNIS VRC gateway	20 kbps	
SIP gateway	65 kbps	for G.729 or Speex vocoders
	100 kbps	for G.711 vocoder
Application that uses SmartPTT WebSocket	from 65 kbps	for each of the following application: <ul style="list-style-type: none"> SmartPTT Web Client Third Party app over SmartPTT Server API. Exact value depends on the vocoder parameters

Bandwidth must be increased if you activate and use the Bridging feature in SmartPTT Radioserver or create a Cross Patch or organize a Conference Call.

If you have the redundant SmartPTT Radioserver, the bandwidth to that computer must comply the synchronization settings between the main and redundant servers.

Voice traffic between SmartPTT Dispatcher applications (the "Dispatchers" feature) is not sent to SmartPTT Radioserver. To provide this feature, the bandwidth between dispatcher computers

must be 65 kbps or more per each configured contact.

NOTE

The “Dispatchers” feature may refer to as Intercom.

Data transmissison

In SmartPTT, data transmissison implies text messages, indoor and outdoor location, telemetry information and control commands.

Source / Target	Minimum	Comments
SmartPTT Dispatcher application	3.5 kbps	For Enhanced CSBK location data from 10 subscribers and location update period T = 7.5 s
Master repeater	20.0 kbps	for each repeater without revert channel
XRC controller	45.0 kbps	for each repeater with revert channel
Computer with MNIS Data Gateway Relay		

Bandwidth must be increased if you activate and use the Bridging feature in SmartPTT Radioserver or create a Cross Patch or organize a Conference Call.

If you have the redundand SmartPTT Radioserver, the bandwidth to that computer must comply the synchronization settings between the main and redundant servers.

Monitoring service

Source / Target	Minimum	Comments
SmartPTT Dispatcher application	42 kbps	for each configured repeater if the Monitoring panel is closed.
	45 kbps	for each configured repeater if the Monitoring panel is opened
Repeater	42 kbps	for each configured repeater

5 Support and Compatibility

5.1 MOTOTRBO Infrastructure

SmartPTT PLUS supports the following MOTOTRBO firmware and software:

Firmware/Software	Version	Comments
Control Stations	R02.09.XX	
Subscriber radios	R02.08.XX	
	R02.07.XX	
Repeaters	R02.09.XX	All repeater-based MOTOTRBO radio systems
	R02.08.XX	
	R02.07.XX	
MOTOTRBO Network Interface Services	R2.90.X	Current generation of IP Site Connect, Capacity Plus and Linked Capacity Plus only
	R2.80.X	
	R2.70.X	
Device Discovery and Mobility Services	3.70.X	Current generation of IP Site Connect, Capacity Plus and Linked Capacity Plus only
XRC and XRT Controllers	R02.80.XX	Connect Plus only
Capacity Max System Server Firmware (CMSS)	R2.9	Capacity Max only
	R2.8	

Additional information on infrastructure:

- Within the radio system, all repeaters, subscriber radios and control stations should use the same or compatible firmware versions.
- If you activate the Bridging feature, you should bridge only the radio fleet objects which are associated with the same or compatible firmware versions.

- Access and operation in radio systems for SmartPTT requires a separate licensing.

5.2 Elcomplus Products

SmartPTT PLUS is compatible with the following Elcomplus LLC products:

Product	Version	Comments
Radio gateway RG-1000e	R2.2	Hardware device for remote access and control over MOTOTRBO control stations
SmartPTT File Transfer	2.0	Application for files transmission over the radio network
Web-SCADA	1.0b	Application for remote control over the AdapTel device , the telemetry data interface adapter

5.3 Third Party Products

The SmartPTT Dispatcher application can be installed and used on [BeFREE 10](#) computers.

Gateways

SmartPTT is tested with the IP Gear Claro 30 SIP-gateway (by ESTel) to access the analog telephone network.

Audio Accessories

- Desktop USB microphone [D-9 by Holmco](#)
- Desktop USB microphone [PS12 by pei tel](#)
- Push-to-talk button [PTT-13 by Imtradex](#)

6 List of Ports Used by SmartPTT System

5060: Port is set by default and can be changed.

4001: Port can't be changed.

Table 1 – List of SmartPTT Dispatcher ports (Source).

Transport Protocol	Source	Destination	Comments
TCP	X	8888	Server (Commands)
UDP	18501	18500	Server (Voice)
UDP	18501	18501	Intercom (Communication between Dispatchers), Data, Commands
TCP	18501	18501	Intercom (Communication between Dispatchers), Voice
UDP/TCP	5060	5060	Telephone Interconnect (Commands)
UDP	18700-18748	X	Telephone Interconnect (Voice)

Table 2 – List of SmartPTT Radioserver ports (Source).

Transport Protocol	Source	Destination	Comments
TCP	8888	X	Client (Commands)
UDP	18500	18501	Client (Voice)
TCP	X	110, 25, 587 (with SSL), 995 (with POP3), 993 (IMAP4)	E-mail gateway
UDP	161	161	SNMP (Monitoring)
UDP	162	161	SNMP (Monitoring)

Transport Protocol	Source	Destination	Comments
UDP/TCP	5060	5060	Telephone Interconnect (Commands)
UDP	18650-18660	X	Telephone Interconnect (Voice)
TCP	X	8002	Connection to control station
UDP	4001	4001	Location service for control stations
UDP	4005	4005	Registration Service for control stations
UDP	4007	4007	Messaging Service for control stations
UDP	4008	4008	Telemetry Service for control stations
UDP	50000	50000	For repeater configuration only
UDP	19000–(19000 + Talk Path number)	X	Used by SmartPTT Radioserver for talk paths for Connect Plus network configuration
UDP	5005	4005	Registration Service for Connect Plus network configuration
UDP	5007	4007	Messaging Service for Connect Plus network configuration
UDP	5001	4001	Location Service for Connect Plus network configuration