



Version 9.2

SmartPTT PLUS

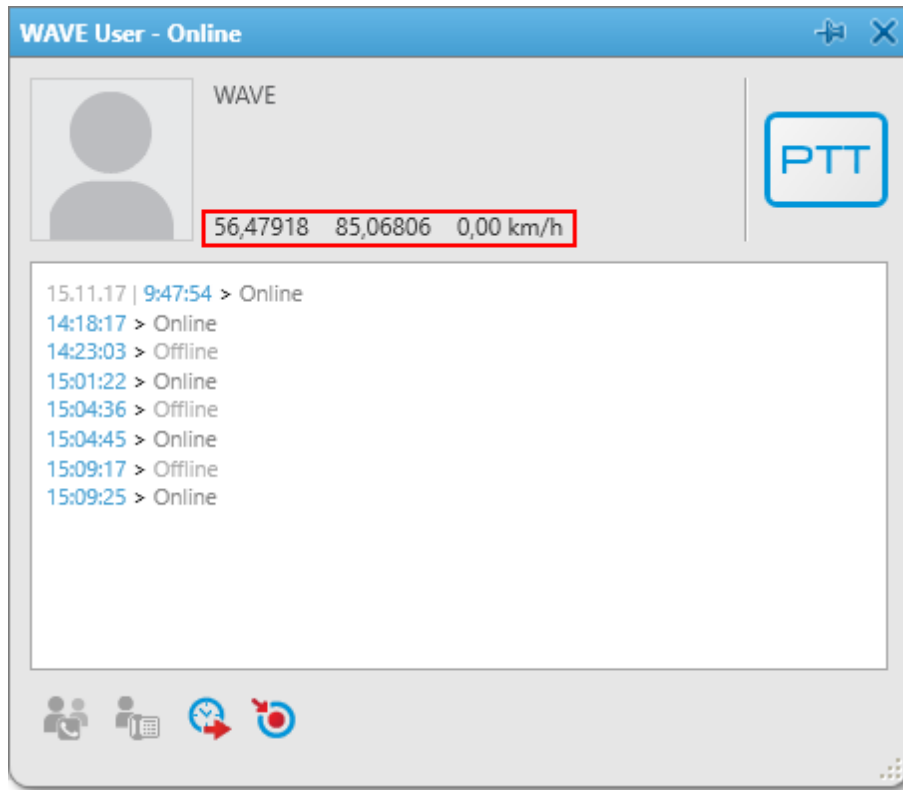
Release Notes

December 2017

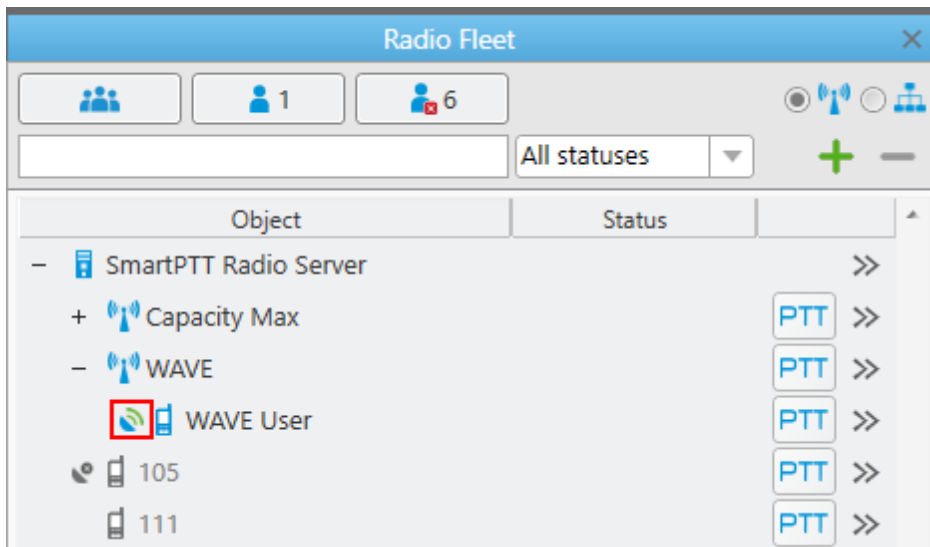


New Features

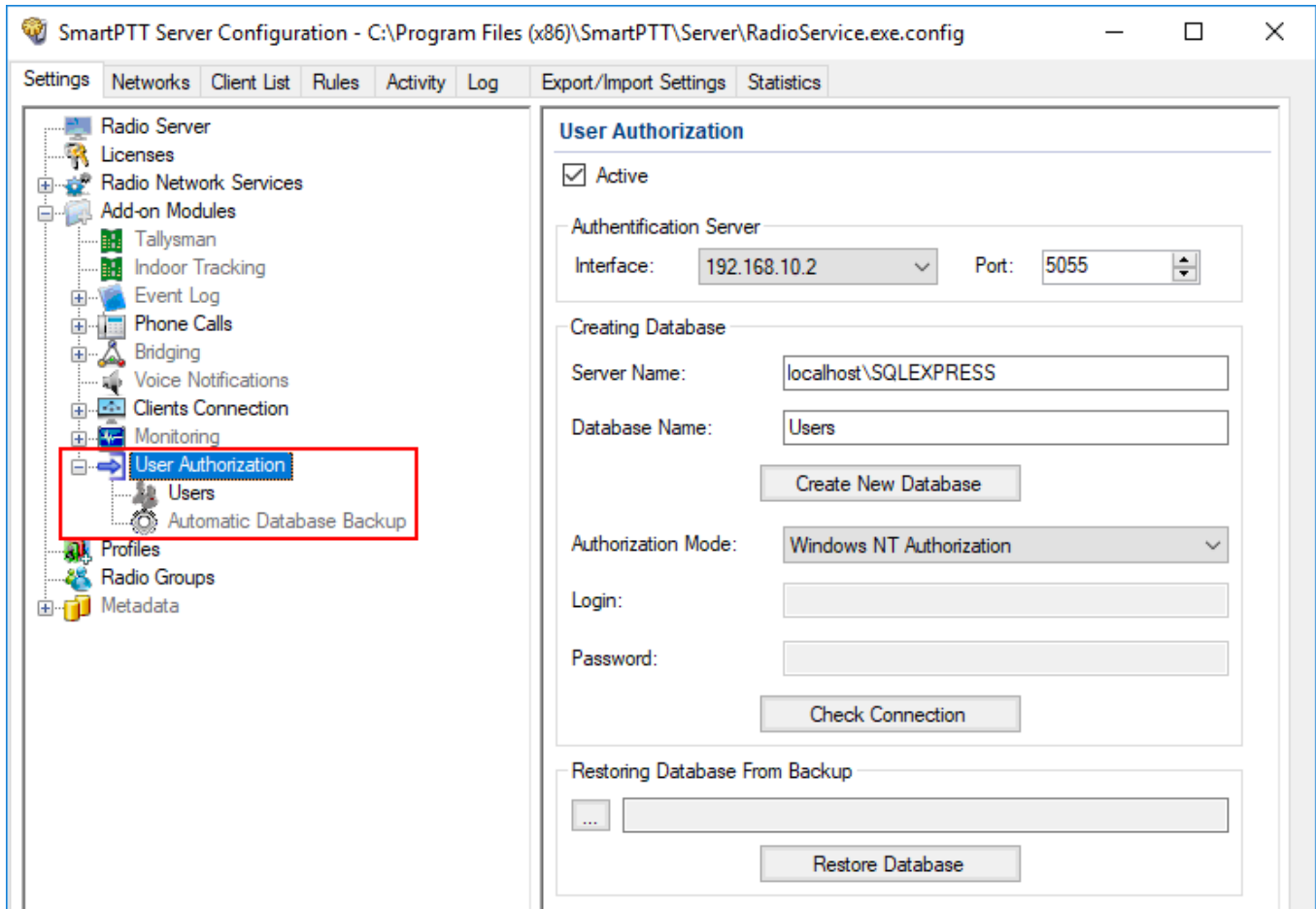
1. Added WAVE-location feature.



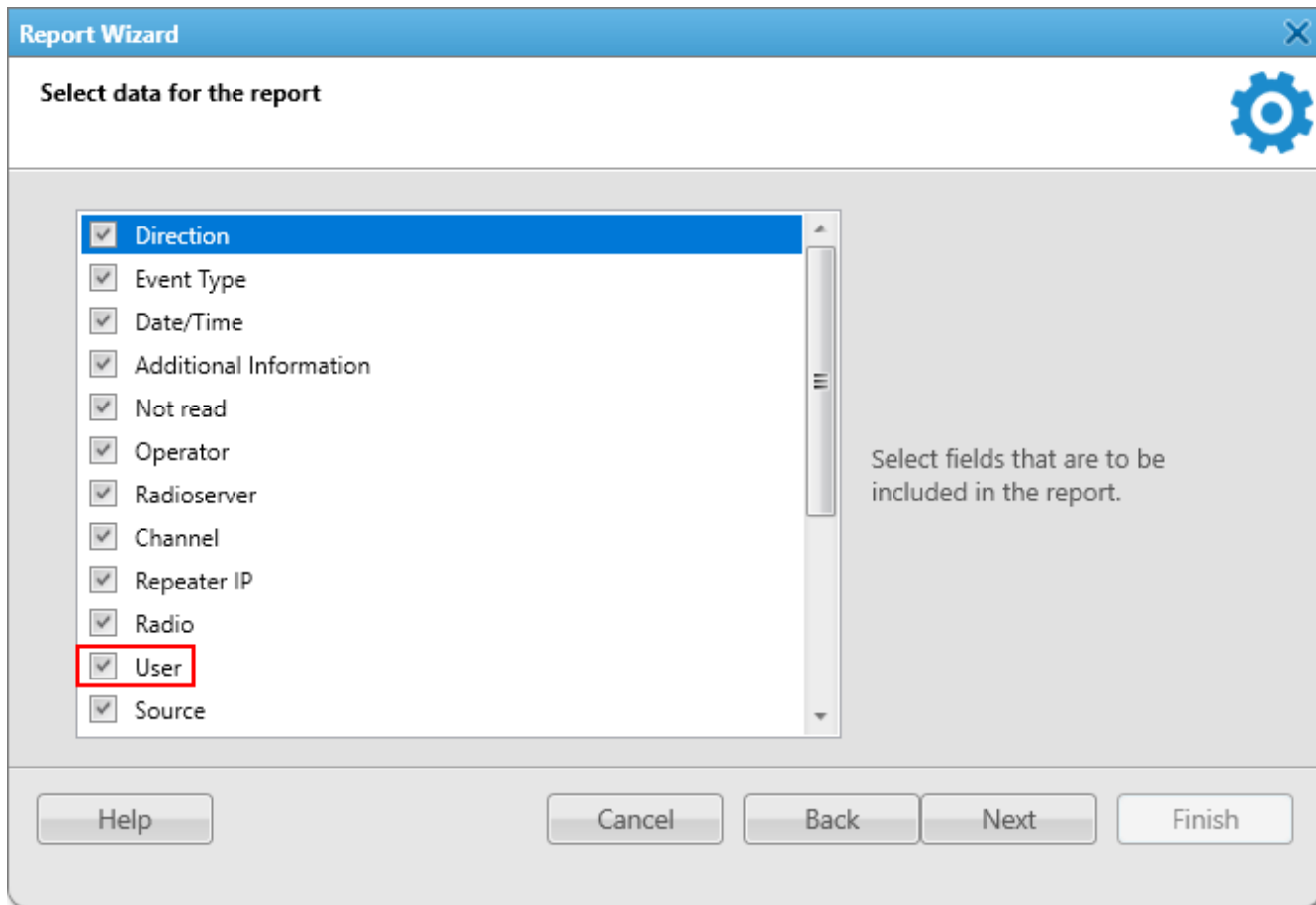
2. Added GPS validity indication for a WAVE user on the **Radio Fleet** panel.



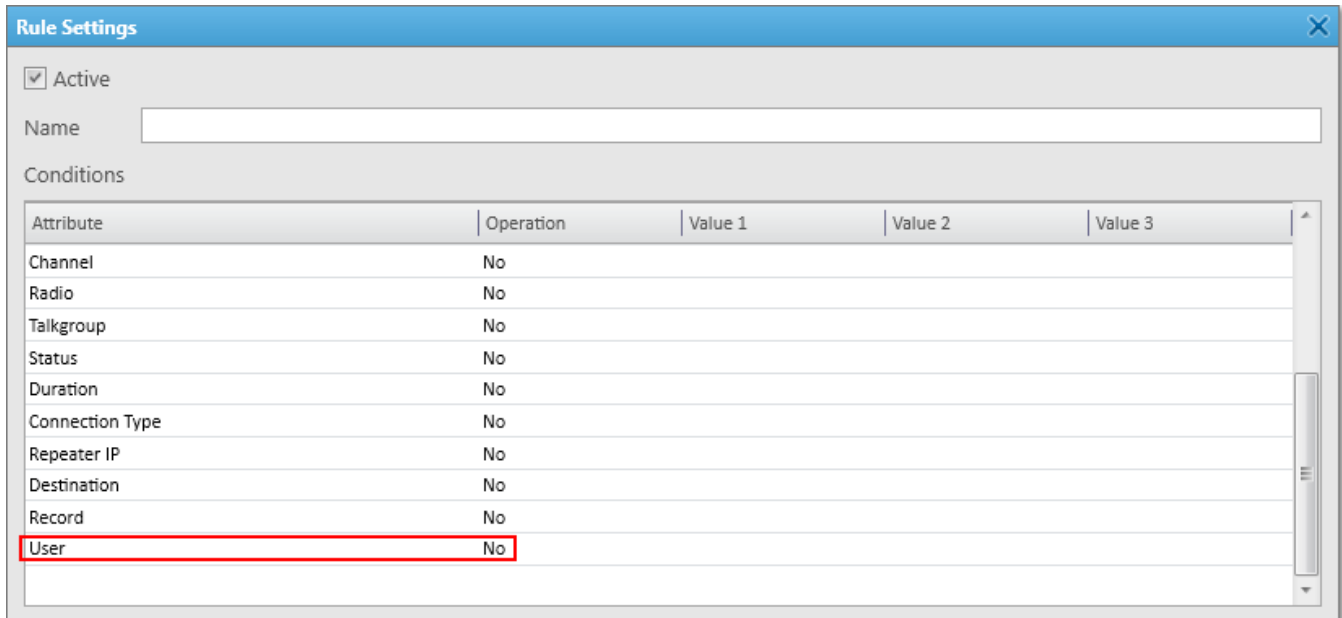
3. Added Sign In/Sign Out feature:
 - Renamed subscriber to radio
 - Introduced a new **User** term for denoting a Sign In/Sign Out user
 - Added **User Authorization** settings to SmartPTT Radio Server Configurator



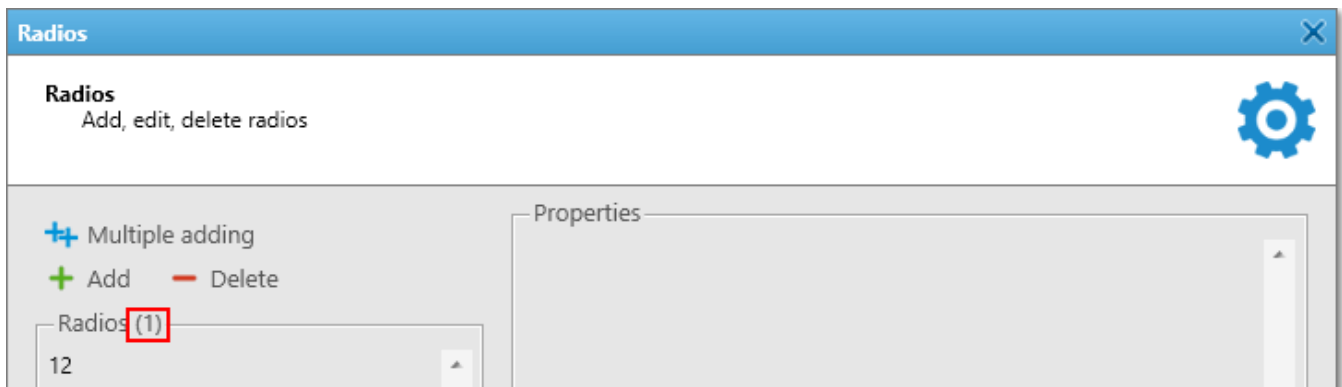
- Added feature for generating reports on Sign In/Sign Out users in SmartPTT Dispatcher Report Wizard, Radio Locations, and Radio Movement reports



- Added a new **User** condition for positioning rules and custom rules in SmartPTT Dispatcher, and rules in SmartPTT Radio Server Configurator

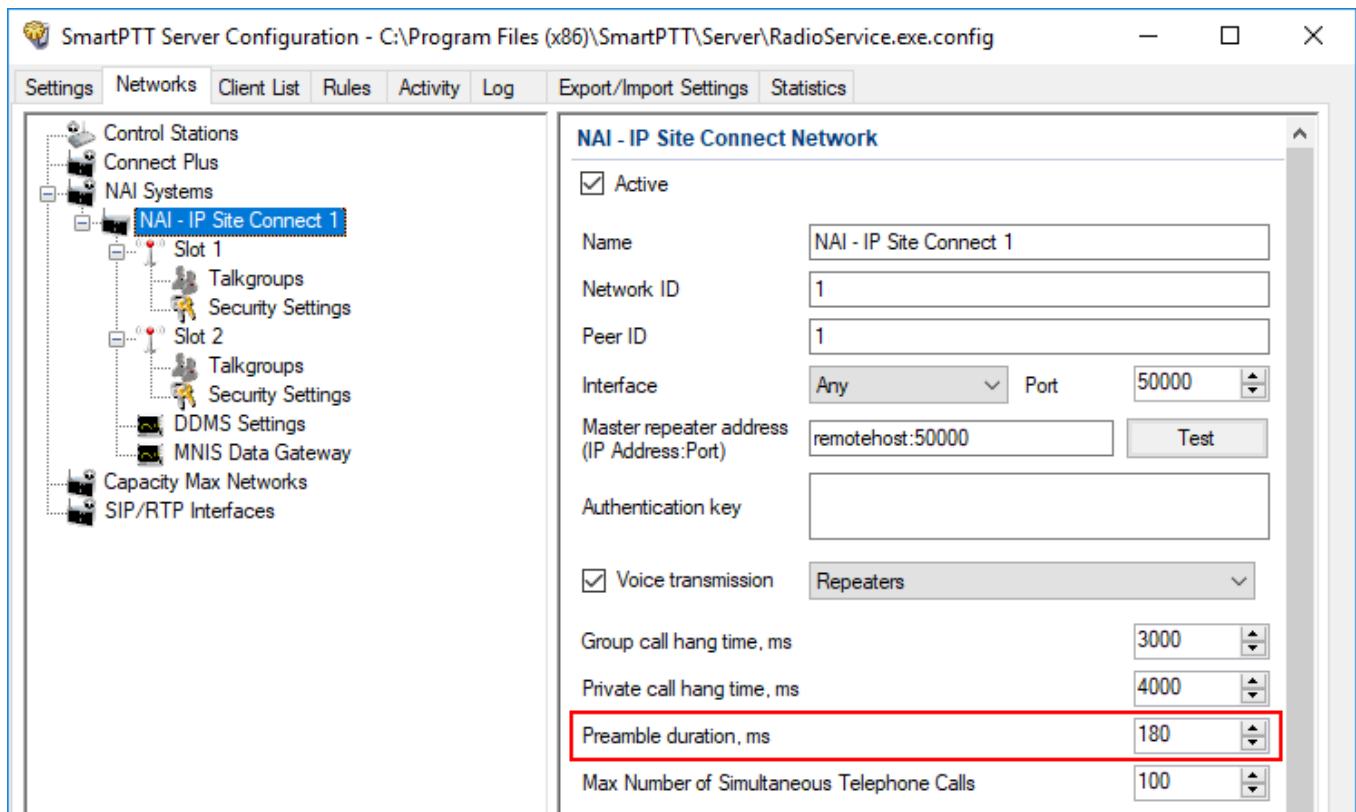


4. Added features for operating with a large amount of radios in SmartPTT Dispatcher:
 - Added radios amount indicator in the **Radio** menu

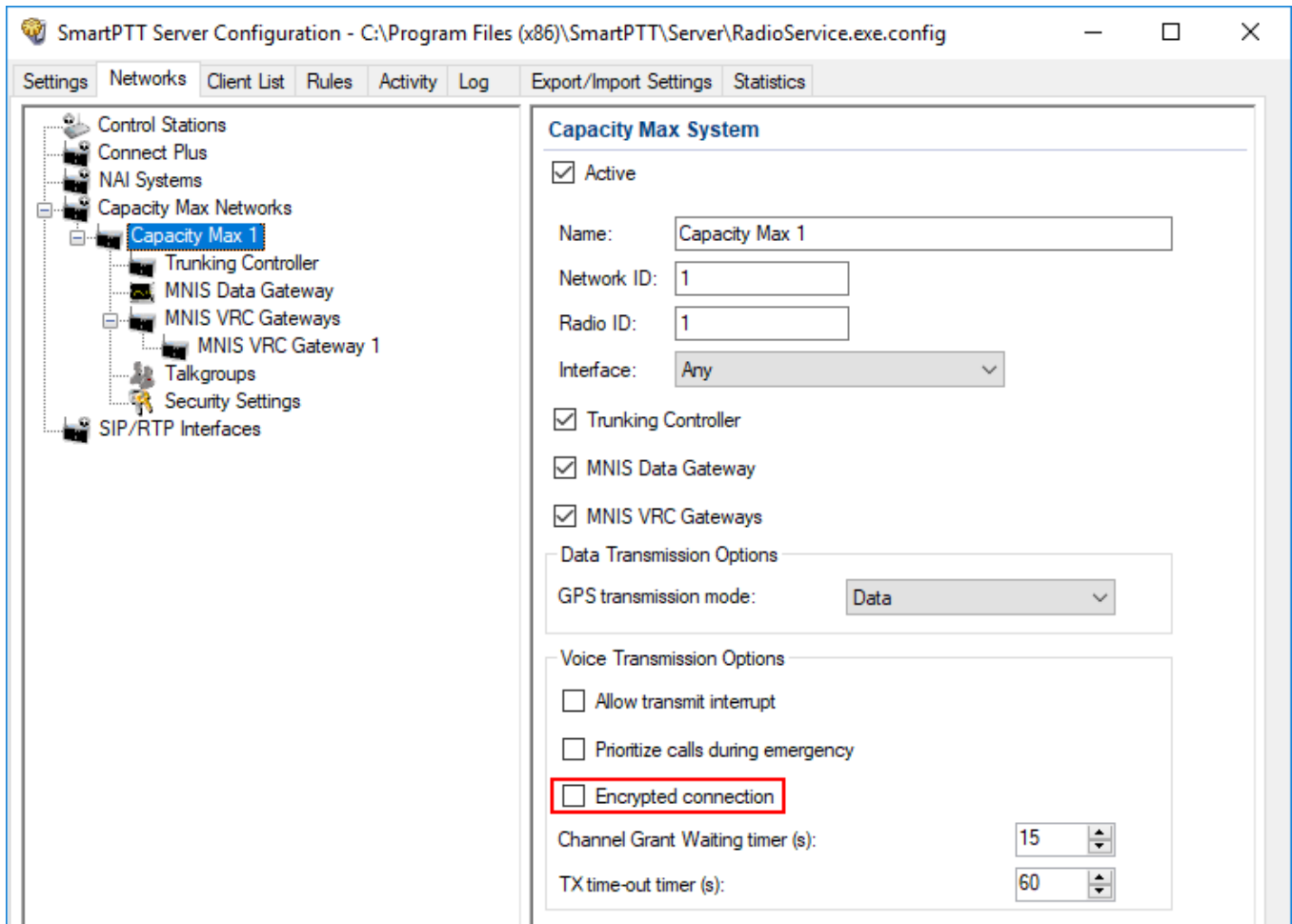


- Added radio multiple selecting feature in the **Category** menu

5. Added option for changing preamble duration.

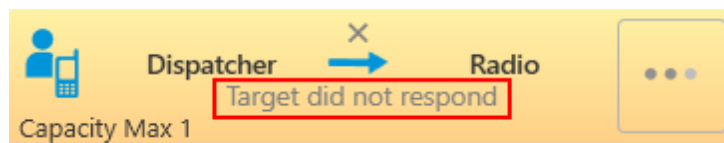


6. Added TLS-encryption feature for voice transmissions in the Capacity Max network.

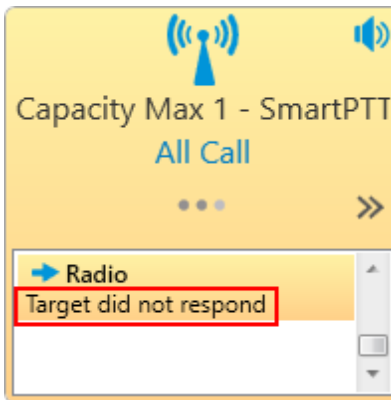


7. Added indication of the cause of an outgoing call waiting for Capacity Max:

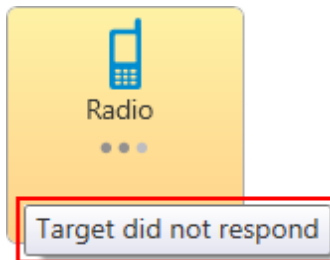
- As a message on the call record



- As a message on the **Channel** element of the dispatch console



- As a tooltip on the **Radio** element of the dispatch console



8. Added indication of a denied outgoing call for Capacity Max:

- On the ended call record



- In the Event Log

Events: records - 1000

Move column header here for grouping

D.	Event Type	Date/Time	Additional Information	Not r...
←	Call	11.04.2017 15:52:39.223	Call not allowed	<input type="checkbox"/>
←	Call	11.04.2017 15:52:34.887	Call not allowed	<input type="checkbox"/>
←	Call	11.04.2017 15:52:30.803	Call not allowed	<input type="checkbox"/>
←	Call	11.04.2017 15:52:24.223	Call not allowed	<input type="checkbox"/>

9. Added indication of an encrypted call for Capacity Max and NAI networks on the call record in the **Calls** panel:

- Capacity Max

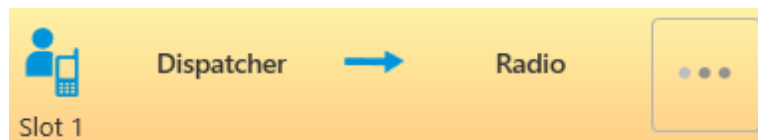


- NAI networks

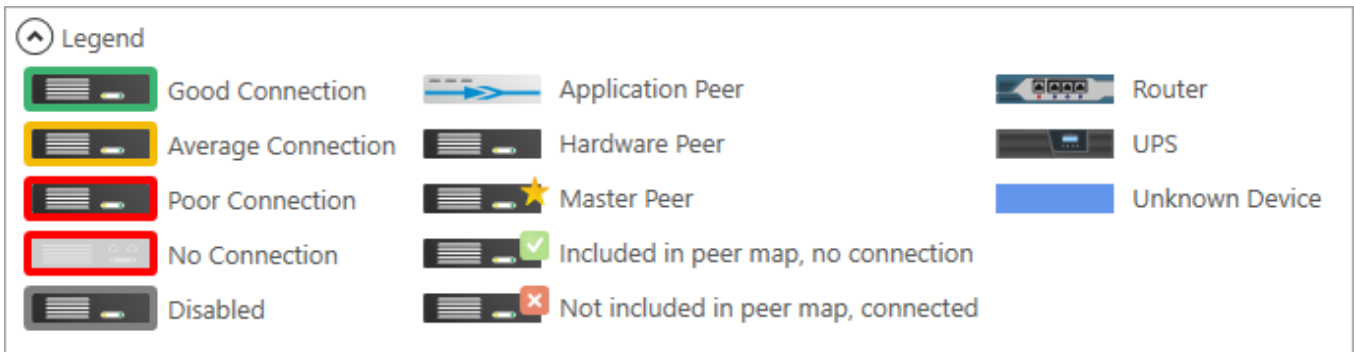


Updated Features

1. Improved sound quality in all networks.
2. Updated SmartPTT Dispatcher **Settings** menu structure.
3. Updated monitoring diagrams. Now they are built significantly faster when working with a large amount of data.
4. Updated Radio Block, Unblock, Check, and Radio Kill outgoing events behavior. Now they always trigger call windows if the corresponding check boxes are selected in the **Interface** → **Call Windows**.
5. In the **Equipment** → **Control Devices** menu of SmartPTT Dispatcher, for Mouse, Touchscreen, and External Devices hold mode is specified as a default setting.
6. Updated Radio Check feature functionality. Now only Radio ID or IP address is used for check.
7. Updated behavior of the **Audio Output Devices** tab of the SmartPTT Dispatcher **Sound** menu. Now **Objects** and **Personal audio output** areas are blocked if no audio output devices except Main Device are added to the devices box.
8. **Initial State** functionality from the **Network Configuration** tab of SmartPTT Radio Server Configurator moved to SmartPTT Dispatcher. Now the way a topology is displayed can be configured in the **Topology** panel of SmartPTT Dispatcher.
9. Increased maximum preamble duration value to 8040 ms.
10. Updated the color of an outgoing call attempt and a call placed in a queue.

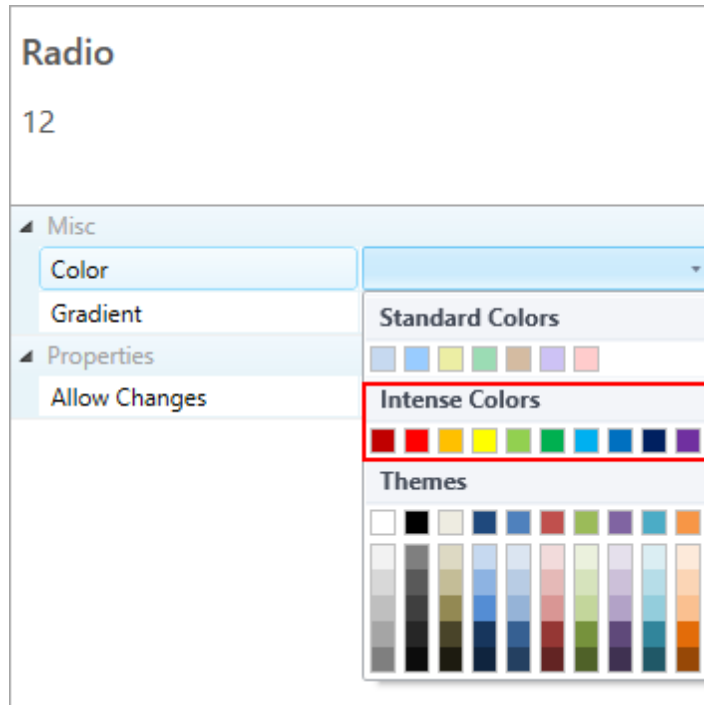


11. Updated topology icons in the **Topology** tab of SmartPTT Dispatcher.

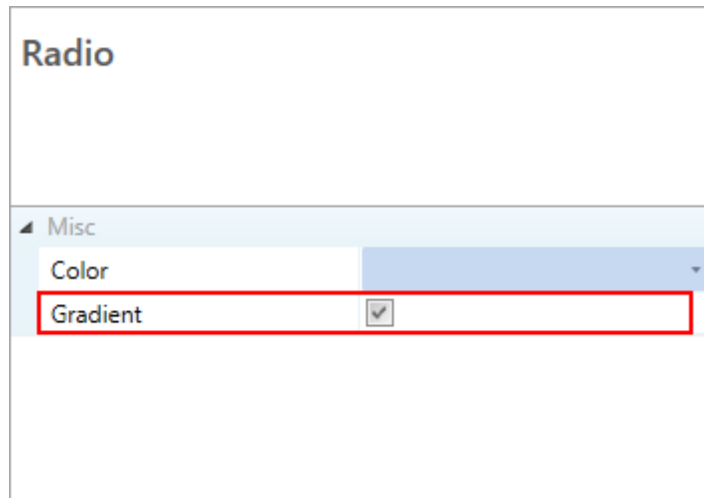


12. Updated color settings of custom console elements:

- Added intense colors selection



- Added **Gradient** parameter for all custom console elements except **Panel**, **Image**, and **Incoming Messages**



13. Renamed elements:

Element	Renamed To
Events and Notifications window	Notification Panels
Rules Settings window	Custom Rules
Notification Panels tab	Emergencies
Latest Incoming Calls panel	Recent Incoming Calls
Max Number of Telephone Calls parameter	Max Number of Simultaneous Telephone Calls
Transmit Data Only parameter	Data Channel
Presence information check box	Trunking Controller
Data transmission check box	MNIS Data Gateway
Voice transmission check box	MNIS VRC Gateway
Report wizard Date/Time condition	Date

14. Moved elements:

Element	Moved To
Event Log tab of the Notification Panels menu	detached Event Log → Event Log Settings window
Map tab of the Positioning Systems menu	detached Map → Map Settings window
Recent Incoming Calls area of the Notification Panels tab	Recent Incoming Calls tab

Removed Features

1. Ingit maps are not supported.
2. MapPoint maps are not supported.
3. Radio Activity equipment is not supported.
4. Removed **External Radioservers** feature from **Networks** tab of SmartPTT Radio Server Configurator.

Fixed Issues

1. In telephone calls, radio voice record did not work.
2. Dispatcher was unable to participate in a telephone call.
3. In the Capacity Max network, SmartPTT Dispatcher stopped working at connecting to a radio server that has groups and Site All Call with the same IDs.
4. SmartPTT Dispatcher operator was unable to end a private call if the channel was changed on the radio station during the call.
5. On the indoor plan a radio was shown near the last beacon even if the radio is out of range.
6. Radio was not displayed with coordinates on a map at Web Client running.
7. A failure that led to the malfunction in the message sending queue.

Known Issues

1. If a large amount of radios is added to a radio server (about 10000), the radio server restart time increases dramatically.
2. The dispatcher or telephone subscriber voice disappears periodically during the conference call at using remote control stations without selected **Private calls** check box in the **Add-on Modules** → **Phone Calls** node of SmartPTT Server.
3. When SmartPTT Dispatcher reconnects to SmartPTT Server, computer performance can decrease.