



# **SmartPTT Enterprise 9.11 Release Notes**

**July 2022**

# Table of Contents

<b>Inter-Server Patching</b> .....	<b>3</b>
<b>SmartPTT Report Tool</b> .....	<b>4</b>
<b>Capacity Max Updates</b> .....	<b>5</b>
Calls Monitoring for Capacity Max .....	5
<b>OpenStreetMap in Web Console</b> .....	<b>6</b>
<b>MOTOTRBO Support Enhancements</b> .....	<b>7</b>
R7 Subscriber Radios.....	7
M2022.01 Firmware .....	7
<b>General Enhancements</b> .....	<b>8</b>
Improved Custom Console UI.....	8
<b>Notification on API Reference App</b> .....	<b>9</b>
<b>Contact us</b> .....	<b>10</b>

# Inter-Server Patching

Connect talkgroups from different radioservers in one patch group.

- **Use cross patches to connect talkgroups from different radioservers**

Efficiently manage communication of geographically distributed subscribers. The calls made to a talkgroup included in the cross patch will be transmitted to all participants of the cross patch, even if they are on different radioservers.

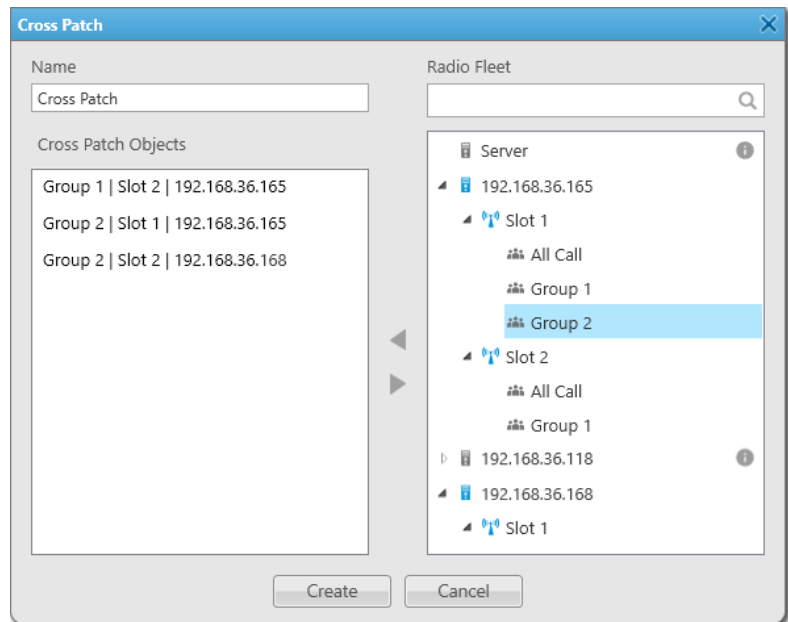
- **Manage server load**

Deploy dedicated servers for different sites and still be able to patch their talkgroups as the need arises.

- **Log and record voice calls**

Voice calls are logged and recorded on all affiliated radioservers.

The Inter-Server Patching license is required.



## NOTE

The Inter-Server Patching might be affected by network parameters.

# SmartPTT Report Tool

Dedicated tool to create large reports from SmartPTT databases.

- **Independent installation**

SmartPTT Report Tool can be installed separately.

- **Multiple types of reports**

Report Tool allows to create all previously available types of reports, as well as new Monitoring reports. The following reports are available:

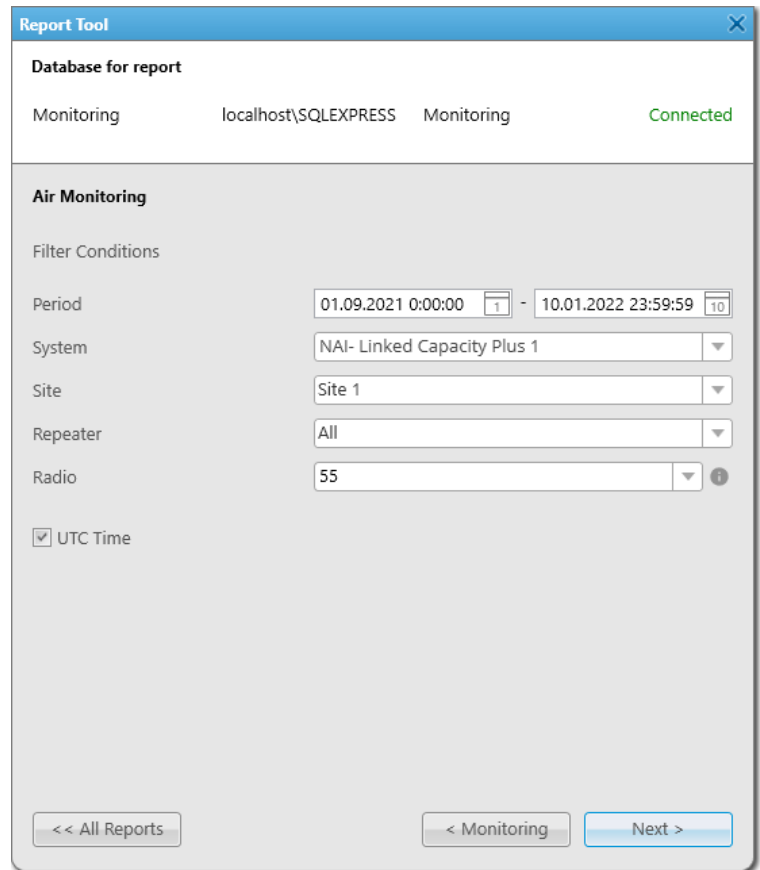
- Event Log.
- Subscriber Locations.
- Subscriber Activity.
- Five new monitoring reports: Air Monitoring, Events, System Usage, Calls, Data.

- **Efficiently process large amounts of data**

Generate reports in a separate tool on any computer, without an additional load on the dispatch console.

- **Configure parameters for your needs**

Use configuration and filtering options to display data in a convenient way.



# Capacity Max Updates

## Calls Monitoring for Capacity Max

Create reports to visualize voice and data transmitted in Capacity Max.

- **Analyze system performance and investigate emergencies**

You can configure report settings and filters to create the report. You can create reports for specific radio fleet objects, events, and time periods.

- **Create reports in popular formats**

Editable tabular format (XLS, XLSX), row data format (CSV), and other popular formats are available.

- **Process large databases with SmartPTT Report Tool**

A new separate tool, SmartPTT Report Tool provides the ability to generate reports from large databases.

The Monitoring license is required.

**System Usage**  
Period: 01.07.21 0:00:00 - 10.03.22 23:59:59  
System: Capacity Max  
Display data for: Half an hour  
Color Indication: 0-5% (green), 6-80% (yellow), 81-100% (red)

**Summary for the whole system over specified period**

Sites total	2
Most loaded site in the system	Site 1 (1 %)
Least loaded site in the system	Site 2 (1 %)

Site	Repeater	Slot	Time Period	Busy Time	%
Site 2	2	0	02.03.15:00 - 02.03.15:29	00:00:03	1%
Site 1	1	1	02.03.15:00 - 02.03.15:29	00:02:15	8%
Site 1	1	0	02.03.15:00 - 02.03.15:29	00:00:01	1%
Site 2	2	0	02.03.15:30 - 02.03.15:59	00:00:02	1%
Site 1	1	1	02.03.15:30 - 02.03.15:59	00:01:12	4%

# OpenStreetMap in Web Console

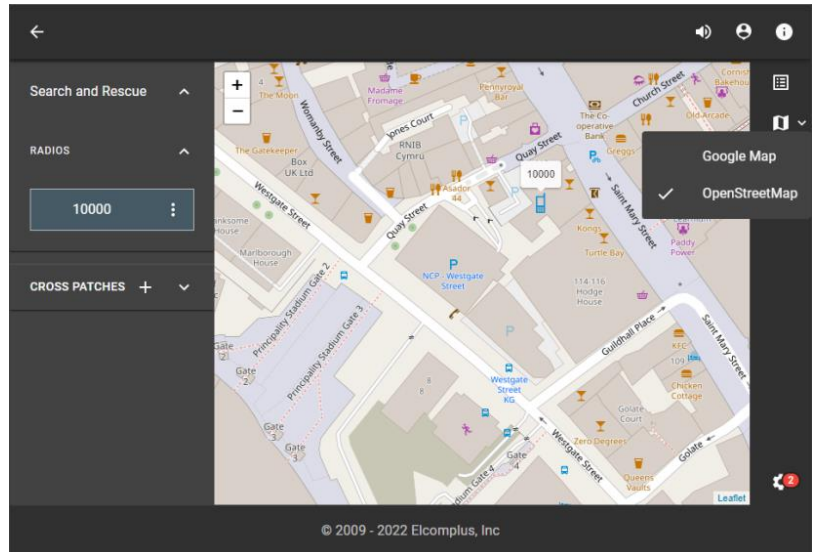
Use OpenStreetMap (OSM), a popular free map provider, in SmartPTT Web Console.

- **Public and local OSM servers support**

You can connect to the public server or configure a local one. Local servers are convenient when you need to securely store your company's commercial data and/or use custom map tiles.

- **Centralized configuration in SmartPTT Radioserver Configurator**

Connection to the OSM server can now be configured in the same SmartPTT Configurator node both for Web Console and Mobile Client.



# MOTOTRBO Support Enhancements

## **R7 Subscriber Radios**

SmartPTT is tested for compatibility with the R7 subscriber radios, a new generation of portable MOTOTRBO radios. The compatibility applies to all product topologies and MOTOTRBO systems.

## **M2022.01 Firmware**

SmartPTT is verified and supports M2022.01, a new MOTOTRBO release.

# General Enhancements

## **Improved Custom Console UI**

The appearance of the custom console elements was enhanced to improve user experience. This includes updated channel selectors and a new design of radio tiles.



## Notification on API Reference App

The SmartPTT team wishes to clarify the status of the SDK Explorer app. This is a reference app that demonstrates the SmartPTT API capabilities. It is not an app whose code can be re-used for custom application purposes.

# Contact us

If you have a request or want to learn more about our solutions, please contact our sale managers via email [sales@smartptt.com](mailto:sales@smartptt.com).

Customer support is provided by the SmartPTT Technical Support Center. You can contact a support engineer via the email [support@smartptt.com](mailto:support@smartptt.com) or by sending a request on the official support website [support.smartptt.com](http://support.smartptt.com).

The SmartPTT Technical Support Center does not consult on deployment and maintenance of the Motorola Solutions products except on settings related to the SmartPTT connection and data communication. For technical support on Motorola Solutions products, please contact an authorized Motorola Solutions representative in your region.

**Web:** [smartptt.com](http://smartptt.com)

**Email:** [info@smartptt.com](mailto:info@smartptt.com)

**Tel.:** +1-786-362-5525

**Mailbox:** 290 NW 165th St, Ste P-800A, 3rd Flr, Miami, FL, 33169, USA