

# SmartPTT Enterprise

Release 9.10

## Content

- 3 Sub-fleets of Clients
- 5 Proximity Alerts
- 7 Private Voice Notifications
- 9 Enhancements
- 10 Contact Us

# NEW FEATURES AND ENHANCEMENTS



November, 2021

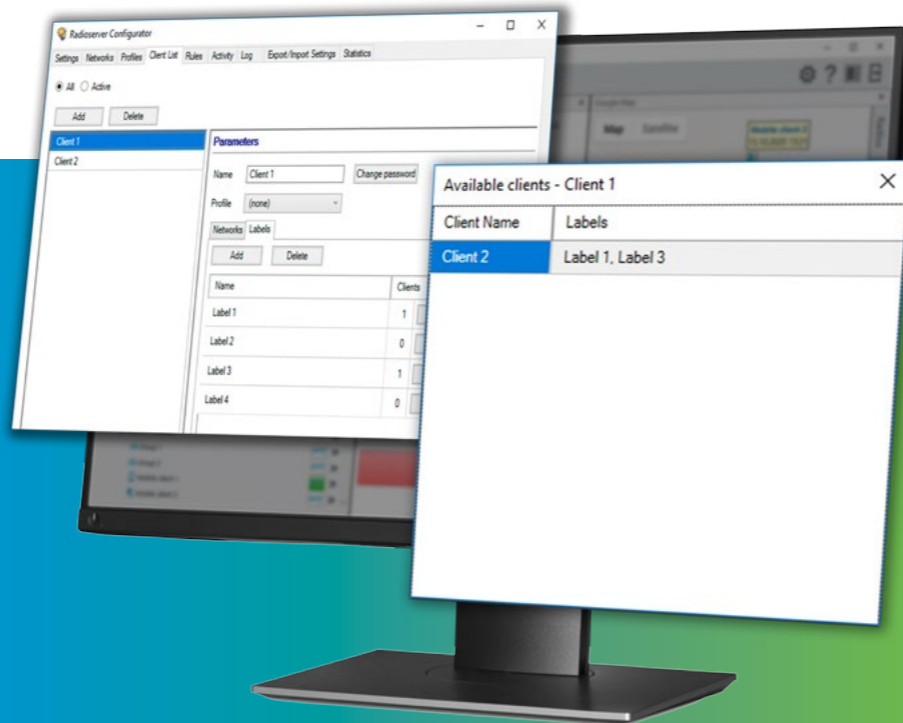
## Sub-fleets of Clients

**Create and host multiple sub-fleets of subscribers and dispatchers on the same server**

Members of each sub-fleet may only access other members of that sub-fleet. Each subscriber and dispatcher may belong to multiple sub-fleets.

**Create separate sub-fleets and assign the corresponding department label (i.e. security, maintenance) to them. Save the changes and start working.**

**Now you have your subscribers communicating only within the desired sub-fleet**



### What do I get?

Imagine you have two departments (e.g., security and maintenance) equipped with mobile apps that have completely different tasks and never cooperate. Working using the same communication channels may cause confusion and reduce communication and work efficiency. With SmartPTT, you can easily divide the departments into different communication groups.

SmartPTT allows assigning multiple sub-fleets to the same operator or assigning a specific dispatcher to the chosen fleet. Do it with SmartPTT just in a few steps. This feature helps you save budget and human resources when the management of multiple small sub-fleets is needed, as you don't need to assign a separate dispatcher to each fleet or create a separate server for a small fleet dispatch.

### What else?

Having many separate servers might be quite budget-unfriendly. Besides, it is impossible to reorganize your sub-fleets quickly as they are hosted in different places, belong to the individual servers, and have individual logs. SmartPTT Enterprise 9.10 makes it possible and easy.

**All in one place**

### Scope

Assign sub-fleets to mobile app accounts, web dispatcher accounts, and desktop dispatcher accounts. SmartPTT has the same accounting mechanism for different types of accounts.

Have an idea on strengthening the feature and making it more useful for your business?

Please email us at [ideas@smartptt.com](mailto:ideas@smartptt.com)

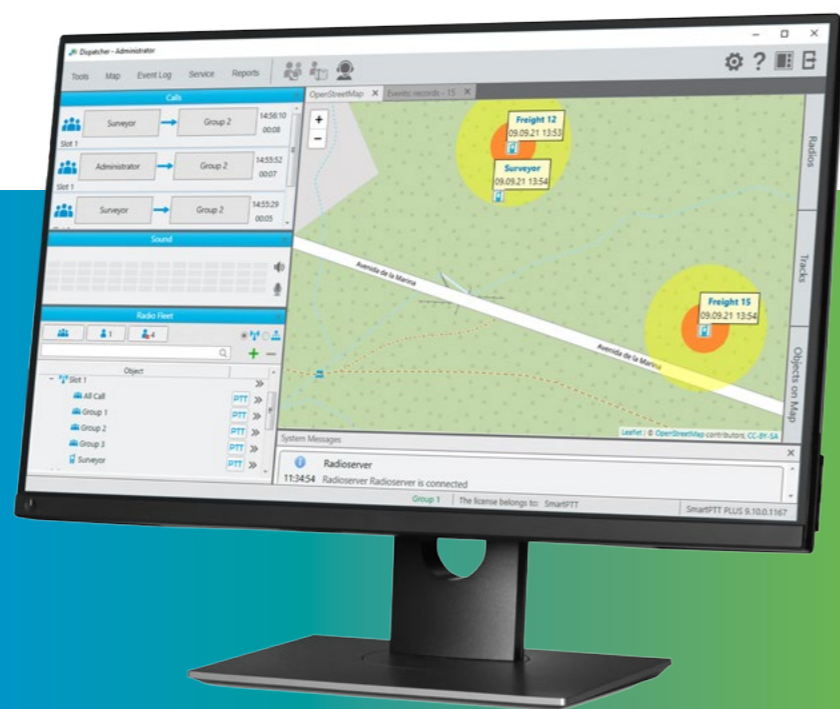
## Proximity Alerts

Get notified whenever employees approach hazardous or off limits areas, provide employees with automated customized alarms

Control the distance between mobile units or create a control zone for a stationary object.

*Choose the stationary object or any mobile unit to create a geofence.*

Take quick action to prevent accidents.



### What do I get?

Managing vehicles and workers in the same area might be complicated. To prevent accidents and ensure safety, you have to control everything at once, for example, vehicle and employees' locations. With SmartPTT Proximity Alerts feature, you can track your vehicles and protect your employees. When a worker approaches too close to a vehicle, the vehicle driver, the employee, and the dispatcher will be alerted.

What about logistics? Every cargo must be delivered quickly and safely. Automated tracking of your vehicles' positioning prevents crashes and minimizes cargo damages. The accurate location helps organize the most efficient route and reduces idle time.

Not logistics only. The feature is used to ensure employees' safety and safeguard expensive equipment. The safety of your assets and personnel depends on the ability to track the rule violations and prevent them timely. Geofencing helps here.

### What else?

Personnel and other resources coming too close may lead to dire consequences, whether we mean hazardous chemical cargo, radioactive areas, or other protected zones and objects. SmartPTT Enterprise 9.10 helps you control it all automatically.

### Are false notifications possible?

Configure the radius, distance, type of notification, rules, and alerts to avoid false notifications. Create a specific category of subscribers that should not be approached. Choose a radius and color displayed at the console for every category. Every detail of the interface is customizable for your needs.

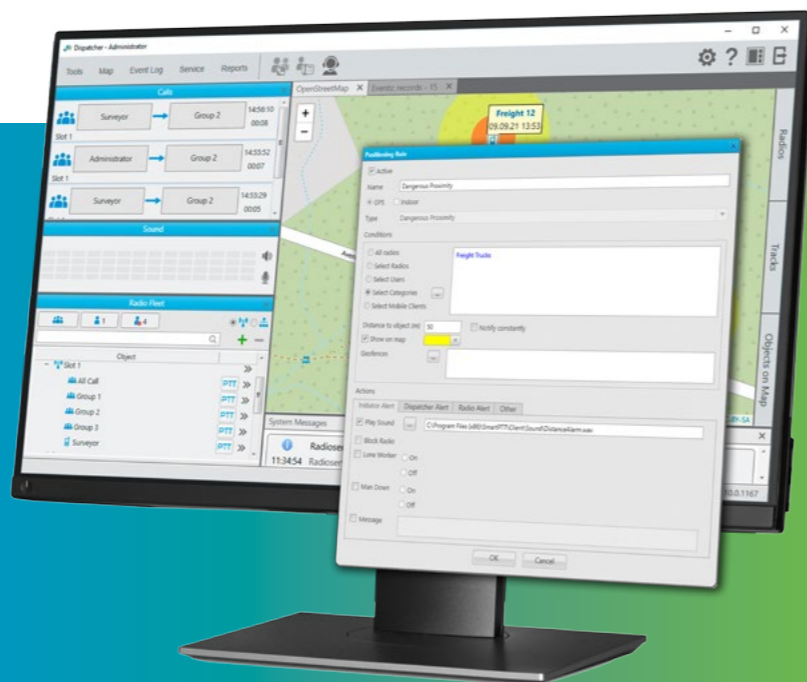
Automated safety control

## Private Voice Notifications

**Track the rules breaches and notify your employees about them personally**

Send personalized voice alerts to radio users with no extra effort. Create custom alert recordings. When an employee crosses in or out of a geofence or the system detects a rule violation, the worker will receive a call warning them about the situation.

*Create a specific voice notification for every rule. Configure your system to call the subscriber in case of a rule violation. Get notified about the event and make correct decisions.*



**The dispatcher can take over control and manage alerts manually any moment they think it would be more efficient**

### What do I get?

Employees are notified as soon as they enter a hazardous or off-limits area. The system works automatically in accordance with pre-set algorithms. This makes dispatchers' work easier and more efficient, reducing response time.

Helping employees to understand the level of importance can play a significant role in enhancing the safety level. Generalized alerts might be ignored, but personalized alerts and private voice notifications are intended to alert users of danger in the most efficient way and reduce employees' response times.

### What else?

General notifications might be ignored by employees, or the dispatcher may be too slow to alert the subscriber about entering a dangerous zone. SmartPTT Enterprise 9.10 aids dispatchers to provide a faster response.

**Reduce human error**

### Coverage

The private voice alerts are available for any rule and alert configuration.

Have an idea on strengthening the feature and making it more useful for your business?

Please email us at [ideas@smartptt.com](mailto:ideas@smartptt.com)

## Enhancements

Additional enhancements available in SmartPTT Enterprise 9.10.

### SUBSCRIBER ALIASES

This enhanced feature helps set radio aliases on your radio server. Import aliases in a centralized way, if needed: upload the list of subscriber aliases from a CSV file, and start working with them right away.

Aliases will be available for desktop, web, and mobile clients.

### REQUIRED PASSWORD

The required password setting enhances system security. Now, when starting the system for the first time (whether initially or after an update), you will be required to set a non-blank password.

The password may contain space symbols. The password containing space symbols only is also available.

### SUBSCRIBER REPORTS

The updated reports contain not only online subscriber info, but also include detailed data on the last appearance of the offline subscriber, e.g., time and date of the latest appearance.

### REMOTE ASSISTANCE

When installing the software, choose the "Remote assistance" option in the installer. The latest versions of remote assistance software will be set up along with the system.

This enables our technicians to remotely access the system to provide a faster response to your questions or issues.

## Share your thoughts

If you want more info, have a new request, or want to learn more about our other solutions, please contact your local sales consultant.

We will be happy to consult with you personally and demonstrate the capabilities of our solution.

## Contact us

North, Latin America, Caribbean  
1.786.362.5525

Europe, Africa, Asia Pacific  
7.3822.522.511

[sales@smartptt.com](mailto:sales@smartptt.com)



[www.smartptt.com](http://www.smartptt.com)

Elcomplus, Inc.

Phone: +1 786-362-5525

Email: [miami@smartptt.com](mailto:miami@smartptt.com)

Mailbox: 290 NW 165th St, Ste P-200, 3rd Flr

Miami, FL, 33169, USA